

# YOUR GUIDE TO GETTING TO & FROM THORPE PARK LEEDS



# WHERE IS THORPE PARK LEEDS?

Thorpe Park Leeds is ideally located for access by a range of commuting options. With frequent bus services, great cycle connections and access to the regional and national road network, the commute to work can be easy, healthy and sustainable. We've pulled this commuting guide together to enable you to make smart journey choices to and from Thorpe Park Leeds.

For further information or additional advice, please take a look at the ParkLife website or contact our team.

 [THORPEPARK-PARKLIFE.CO.UK](https://thorpepark-parklife.co.uk)

 [INFO@THORPEPARK-PARKLIFE.CO.UK](mailto:info@thorpepark-parklife.co.uk)



# CYCLING

Did you know that Thorpe Park Leeds benefits from some fantastic local cycle connections, with part of the National Cycle Network passing directly through the site? For those who live within a reasonable distance, cycling could therefore be a great commuting option, and provides a way to reduce both your travel costs and your environmental impacts.

Whilst quicker on-road routes exist, a cycle ride from Leeds City Centre will take around 40-minutes at an average pace, along largely off-road and scenic routes through the nearby Temple Newsam Park. What a great way to start or end your working day!

To find out more about cycling to Thorpe Park Leeds, including access to an online route planner, visit [thorpepark-parklife.co.uk](http://thorpepark-parklife.co.uk)!

## HOW DO WE SUPPORT CYCLISTS?

Simply jumping on a bike and cycling to work isn't easy for everyone. We therefore work to support cyclists in various ways, including:

- Dr Bike health checks – frequent, free onsite cycle checks
- Access to cycling related discounts and offers through ParkLife
- Personal route planning support
- A programme of active travel events.

## BICYCLE USER GROUP

Whether you are looking to connect with like minded cyclists, to seek some friendly help and advice, or to connect with the ParkLife team, joining our Bicycle User Group would be a great idea. The group is used to share cycle related news and meets periodically throughout the year.



SCAN THE QR CODE TO  
SIGN UP TO THE BICYCLE  
USER GROUP

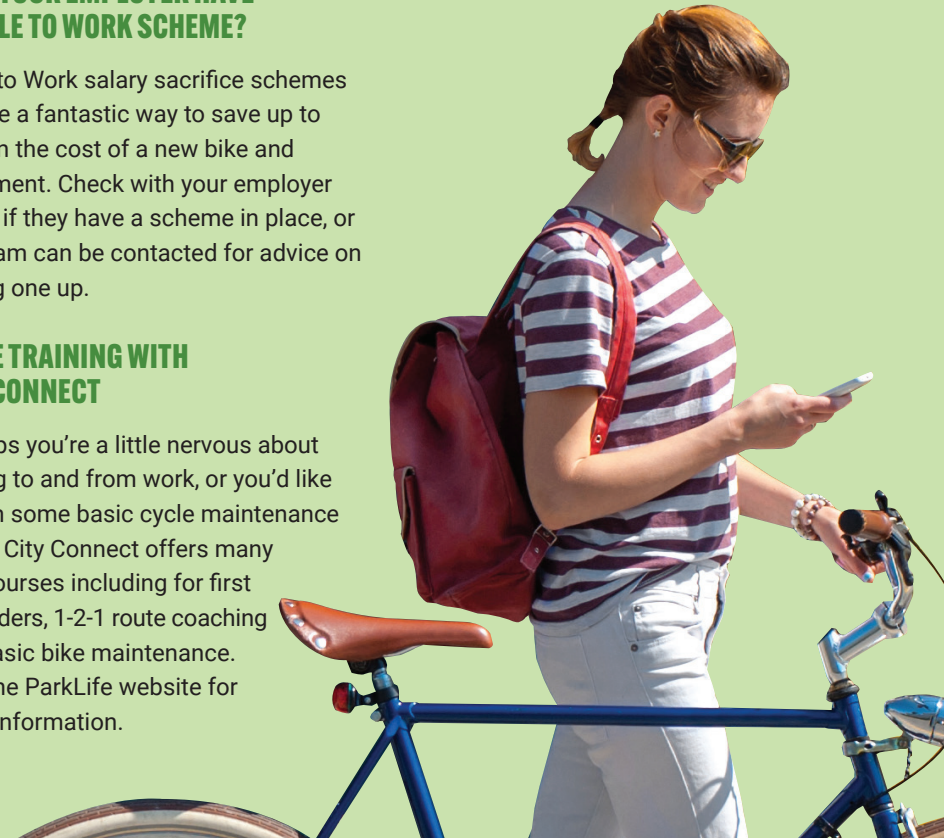
## DOES YOUR EMPLOYER HAVE A CYCLE TO WORK SCHEME?

Cycle to Work salary sacrifice schemes provide a fantastic way to save up to 48% on the cost of a new bike and equipment. Check with your employer to see if they have a scheme in place, or our team can be contacted for advice on setting one up.

## CYCLE TRAINING WITH CITY CONNECT

Perhaps you're a little nervous about cycling to and from work, or you'd like to gain some basic cycle maintenance skills? City Connect offers many free courses including for first time riders, 1-2-1 route coaching and basic bike maintenance. Visit the ParkLife website for more information.

## APPROX CYCLING JOURNEY TIMES TO THORPE PARK LEEDS





# PUBLIC TRANSPORT

## TRAVEL BY TRAIN

Thorpe Park Leeds is located just a short distance from three train stations, which can be easily accessed by bus or bike. Sitting on the Leeds - Selby line, Cross Gates, Garforth and East Garforth stations provide connections to a wide range of local, regional and national destinations, ideal for longer distance commutes or business trips.

## HOP ON THE BUS

Thorpe Park Leeds is served by a range of high frequency bus services, providing connections to a range of local communities. The Arriva service 164/165 passes through the site, stopping along Century Way and at The Springs and connecting to communities including Garforth, Kippax, Cross Gates and Leeds. The service operates with a frequency of 4 buses an hour throughout the day, Monday to Saturday, with a reduced frequency into the evenings and on a Sunday.

A range of additional services are also available, stopping to the south of the site on Selby Road, where shelters with real time information are available.

For further information including timetables and route maps, visit: [thorpepark-parklife.co.uk](http://thorpepark-parklife.co.uk)

## GETTING THE BEST TICKET FOR YOU

If you're planning on travelling by public transport, there are a wide variety of ticket options available including flexible season tickets, WY Metro card, operator specific passes and discounted annual tickets.

For more information on travelling to and from Thorpe Park Leeds by public transport, including details of ticket options, head over to: [thorpepark-parklife.co.uk](http://thorpepark-parklife.co.uk)

## PLANNING A JOURNEY BY PUBLIC TRANSPORT

Planning a journey by public transport has never been easier, with the use of online and app based journey planning tools. Simply enter your journey start and end points, and the time you wish to travel, and you will be advised which services to catch, and where from.

For further information visit the ParkLife website. Alternatively, if you have any questions about your public transport options, please contact the ParkLife team at: [info@thorpepark-parklife.co.uk](mailto:info@thorpepark-parklife.co.uk)



## APPROX JOURNEY TIMES BY PUBLIC TRANSPORT TO THORPE PARK LEEDS



# SUSTAINABLE CAR USE

## WHAT IS CAR SHARING?

Also known as lift sharing or car-pooling, car sharing is essentially sharing your car journey with at least one other person. By matching your journeys with other people there is the potential to significantly reduce emissions from travel whilst also saving money.

## HOW MUCH COULD YOU SAVE?

If your journey is a 25 mile round trip, 5 days per week, you could save over £460 per year and nearly 800kg in CO<sub>2</sub> emissions per year by just sharing your journey with one other person! Share that journey with 2 other people and you could save almost £1,000 per year on travelling to and from Thorpe Park Leeds!

## HOW TO GET GOING?

Head over to the [Liftshare.com](https://www.liftshare.com) website and input the details of the journeys you would like to make and share.

You'll also need to complete a short registration form before searching for others. **Liftshare.com**



## THE FUTURE IS ELECTRIC!

Electric vehicles are increasingly popular, due to low running costs and an improving awareness of the environmental benefits. Ask your employer about charging points at your workplace, or the availability of an EV salary sacrifice scheme. Alternatively, if you're visiting The Springs, you can charge up there.

Does your employer have an EV salary sacrifice scheme? If not, contact us for advice on how you could save up to 42% on the cost of an electric vehicle.

For more information about EVs and the benefits, head over to the ParkLife website [thorpepark-parklife.co.uk](https://thorpepark-parklife.co.uk)

## CAR CLUBS

Owning a car can be expensive and inefficient so if you only need one for those short business trips, have you considered a car club vehicle as an alternative?

Cars can be rented by the hour, with low costs and inclusive insurance. Simply book, unlock and start the car using your smart phone, and off you go!

There are car club vehicles located across Leeds, with plans to introduce a car within The Springs. More information is available at [thorpepark-parklife.co.uk](https://thorpepark-parklife.co.uk)



# WALKING

A brisk walk in the morning can help kick start the day, helping you feel energised, whilst the walk home can give you the opportunity to de-stress after a busy day. It's often overlooked as a form of exercise, but walking briskly will improve your health and fitness levels and can help with weight loss.

There is also of course no cheaper or more sustainable way to get around, and so for those who live close enough to Thorpe Park Leeds, walking to and from work, even if just occasionally, can make perfect sense.

Visit [thorpepark-parklife.co.uk](https://thorpepark-parklife.co.uk) for more information on walking (or running) to work, including links and further resources.

## PARKLIFE PACERS

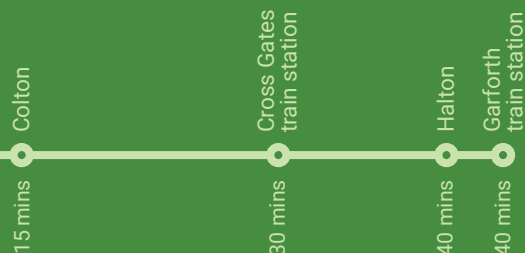
Do you want to get to know the area around Thorpe Park Leeds better? Or perhaps just want to stretch your legs over lunchtime?

Why not join one of our ParkLife Pacer walks? Held frequently the ParkLife team will lead a walk, exploring Thorpe Park Leeds.

Find out more and sign up at [thorpepark-parklife.co.uk](https://thorpepark-parklife.co.uk)



## APPROX JOURNEY TIMES ON FOOT TO THORPE PARK LEEDS



# USEFUL WEBSITES

There are an increasing range of online tools and information sources which can help you to plan and undertake journeys by different travel choices.

Here are just a few we have picked out for you:

## PARKLIFE

When it comes to information on commuting options at Thorpe Park Leeds, the ParkLife website is a great place to start.

[thorpepark-parklife.co.uk](https://thorpepark-parklife.co.uk)

## CYCLE CITY CONNECT

Explore your cycling options across West Yorkshire and find out more about the support available to those travelling on two wheels. Home of the West Yorkshire interactive cycle map.

[cyclecityconnect.co.uk](https://cyclecityconnect.co.uk)

## WY METRO

The home of information on travelling by public transport across West Yorkshire. Plan a journey, download timetables, view maps and much more.

[wymetro.com](https://wymetro.com)

## ARRIVA

Find out more about the key local bus services on the Arriva website. Explore routes, plan a journey, view timetables and buy your tickets.

[arrivabus.co.uk/yorkshire](https://arrivabus.co.uk/yorkshire)



## BUSINESS SUPPORT AND CONTACT

To help support businesses from across Thorpe Park Leeds, the site owners have appointed one of the UKs leading sustainable transport consultancies, TPS, to offer a range of help, support or advice in relation to the commute to work.

Whether you'd like advice on the travel options available, a bespoke commuting strategy for your business, or information on topics such as EV charging or Cycle to Work schemes, you can request free support today.



**THORPEPARK-PARKLIFE.CO.UK**



**INFO@THORPEPARK-PARKLIFE.CO.UK**



**@THORPEPARKLIFE**

